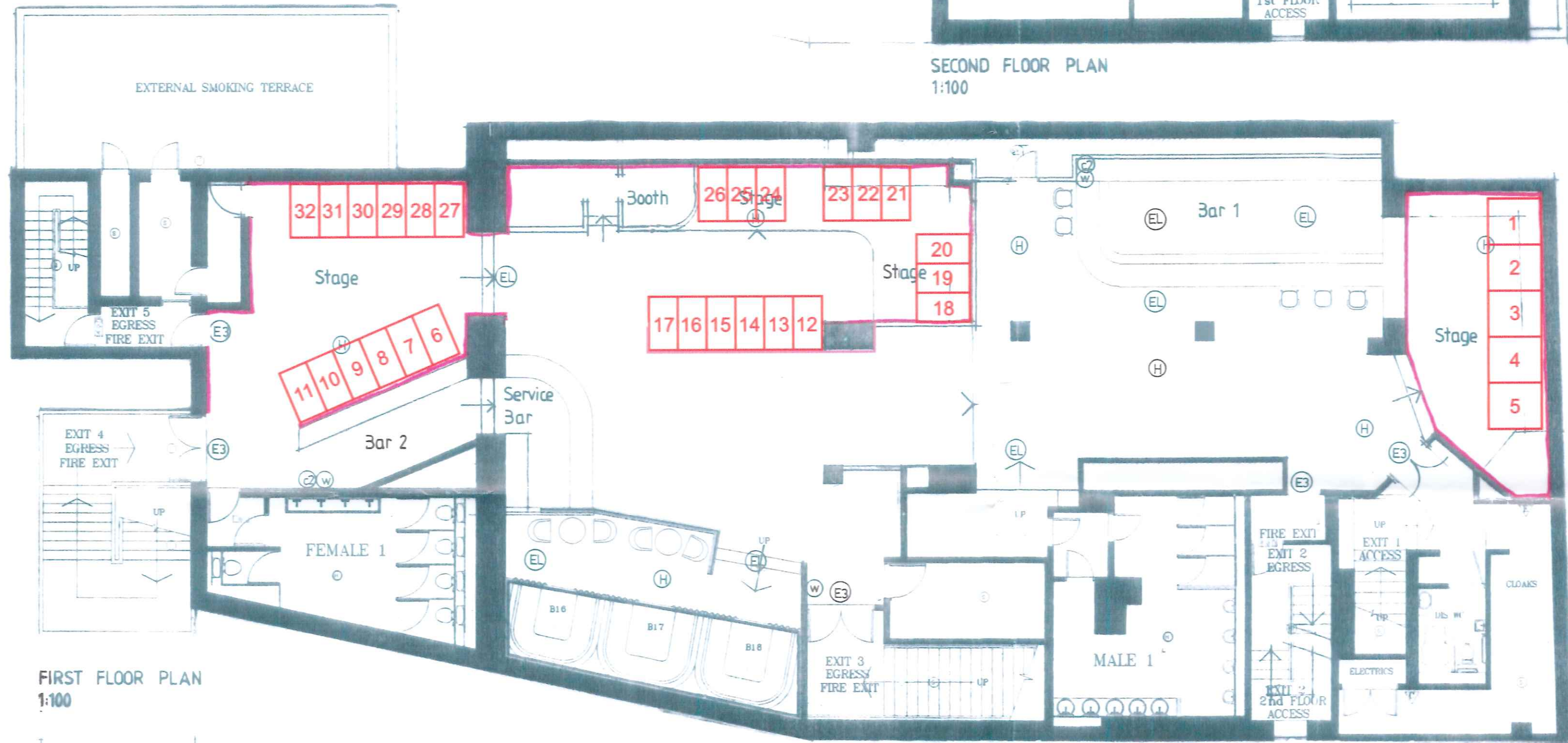
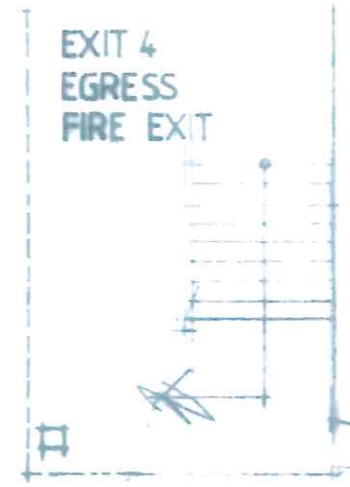


SECOND FLOOR PLAN
1:100

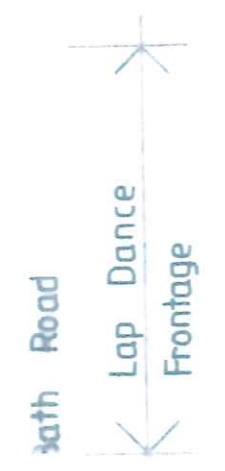
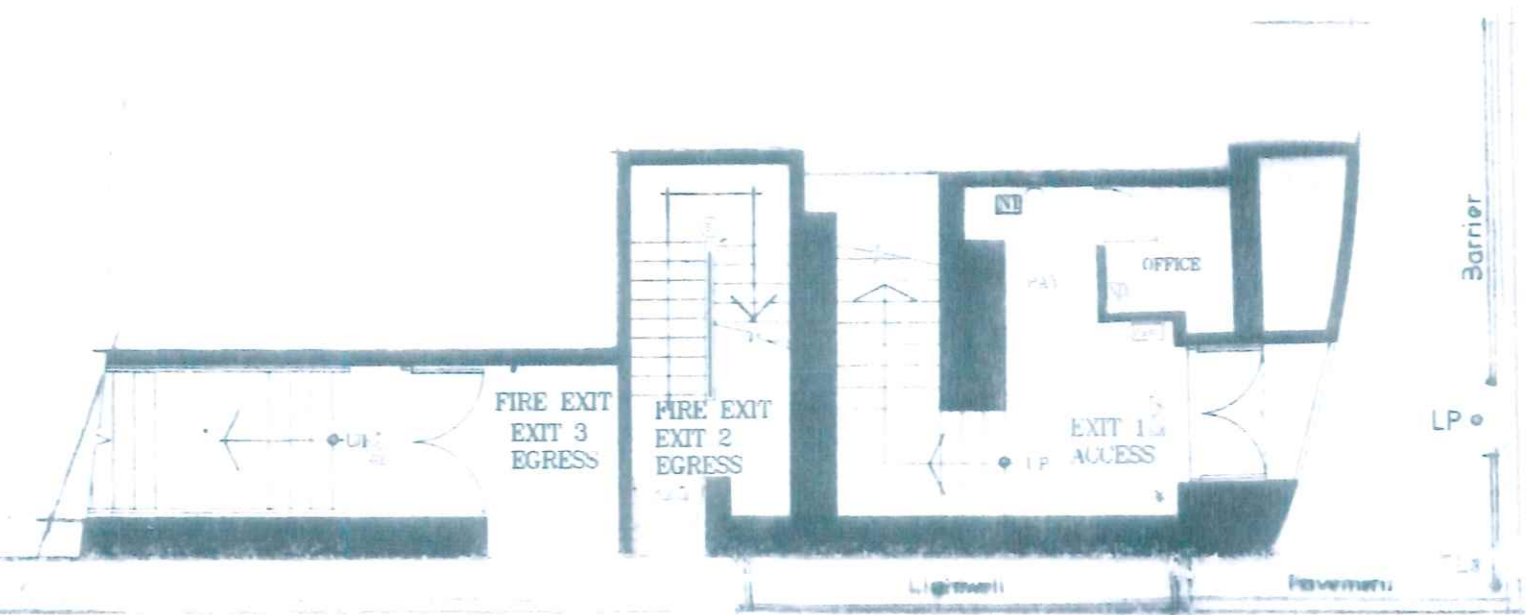


FIRST FLOOR PLAN
1:100

- FIRE ALARM**
- VOID DETECTOR
 - REDCARE LINE
 - SMOKE DETECTOR
 - SMOKE DETECTOR - FIRST STAGE SOUNDER
 - HEAT DETECTOR
 - HEAT DETECTOR - FIRST STAGE SOUNDER
 - COMBINE SMOKE & HEAT DETECTOR
 - MANUAL CALL POINT
 - FIRST STAGE SOUNDER-LED
 - FIRST STAGE SOUNDER-NEON
 - YOKE EVACUATION SOUNDER
 - VOI E EVACUATION HORN/STATION SOUNDER
 - FLASHING BEACON
 - INTERFACE
 - FIRE ALARM PANEL
 - FIRE ALARM REPEATER PANEL
 - DISABLE REFUGE INTERCOM POINT
- EMERGENCY LIGHTING**
- EMERGENCY LIGHT 14.1V N/MS BULBHEAD LIGHT BOX
 - EL 1. BLY AREA COMBINE 28 WATT ED DECORATIVE FITTING
 - EMERGENCY SIGN 240V M3
 - B0H REF A75004 FULVIC AREA AC5019
 - EMERGENCY CLEANFYS LIGHT 240V N/MS IP20 TWIN SPOT WITH MULTI DIRECTIONAL HEADS REF A75007
- FIRE EQUIPMENT**
- 6kg MULTI-PURPOSE FOAM EXTINGUISHER
 - FIRE PLANK
 - 4kg CARBON DIOXIDE EXTINGUISHER
 - ARGONIS FOAM FILLED
 - 8kg MULTI PURPOSE WATER EXTINGUISHER
 - DRY POWDER
- FIRE NOTICES**
- GENERAL BY EACH CALL POINT
 - STAFF
 - KITCHEN
 - DUTY MANAGER



PART GROUND FLOOR PLAN
1:100



The accuracy of this Drawing cannot be guaranteed and all critical dimensions must be taken on site.